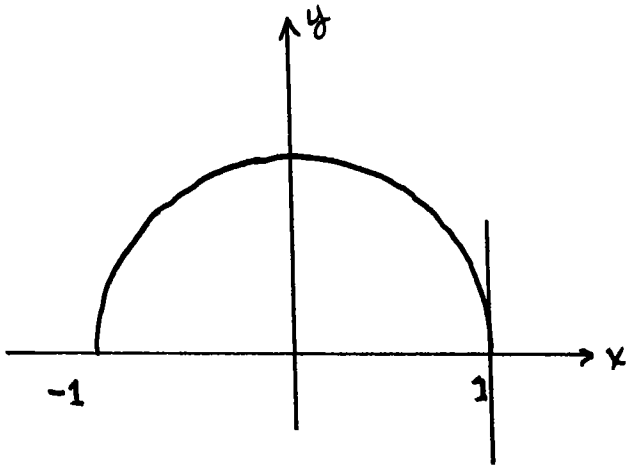


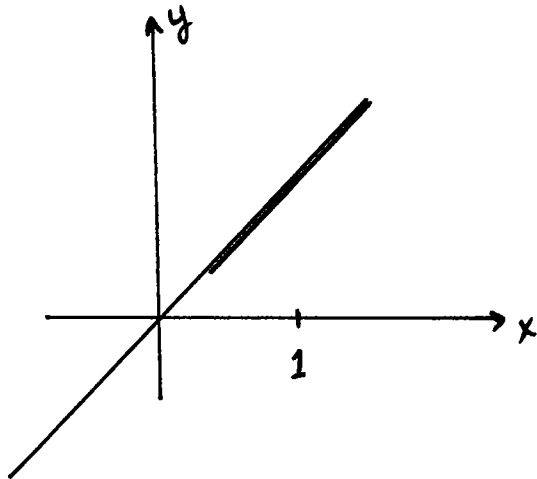
MA161

§.161

6)



8)



10)  $m \approx -3$

12) D C B A

p. 161

$$14) \quad f(x) = \sqrt{x^2 + 1}$$

$$a) \quad \frac{f(2) - f(1)}{2 - 1} \approx 0.821854$$

$$e) \quad \frac{f(2) - f(1.9)}{2 - 1.9} \approx 0.889769$$

$$b) \quad \frac{f(3) - f(2)}{3 - 2} \approx 0.92621$$

$$f) \quad \frac{f(2.1) - f(2)}{2.1 - 2} \approx 0.898727$$

$$c) \quad \frac{f(2) - f(1.5)}{2 - 1.5} \approx 0.866585$$

$$g) \quad m \approx 0.89$$

$$d) \quad \frac{f(2.5) - f(2)}{2.5 - 2} \approx 0.913029$$

$$16) \quad f(x) = \tan 2x$$

$$a) \quad \frac{f(2) - f(1)}{2 - 1} \approx 3.34286$$

$$e) \quad \frac{f(2) - f(1.9)}{2 - 1.9} \approx 3.84265$$

$$b) \quad \frac{f(3) - f(2)}{3 - 2} \approx -1.44883$$

$$f) \quad \frac{f(2.1) - f(2)}{2.1 - 2} \approx 6.19958$$

$$c) \quad \frac{f(2) - f(1.5)}{2 - 1.5} \approx 2.60074$$

$$g) \quad m \approx 4.6$$

$$d) \quad \frac{f(2.5) - f(2)}{2.5 - 2} \approx -9.07667$$